

# Cisco Nexus 9508 Switch

## Port Replication Solution

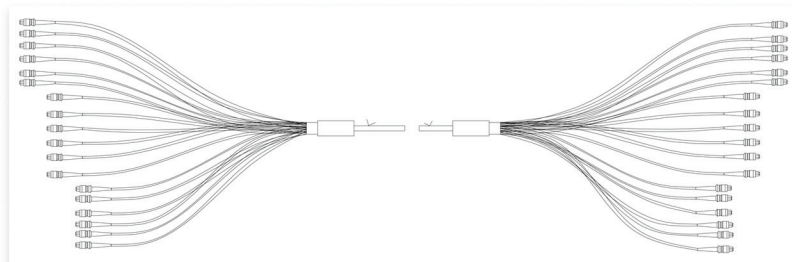
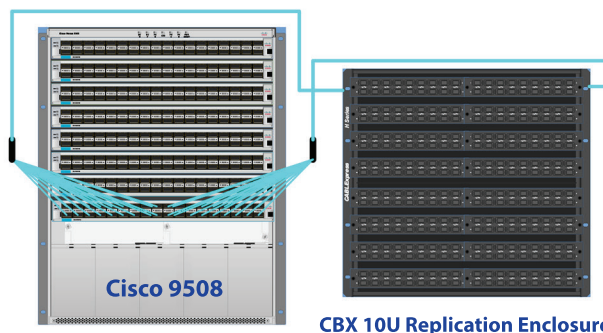


CABLEExpress® Port Replication simplifies cabling for mission-critical data center hardware, offering efficiency and aesthetic appeal. It establishes a direct link between active hardware ports and the structured cabling system, reducing errors and enhancing overall efficiency for a refined appearance. This reduction in errors ensures the reliability of mission-critical hardware.

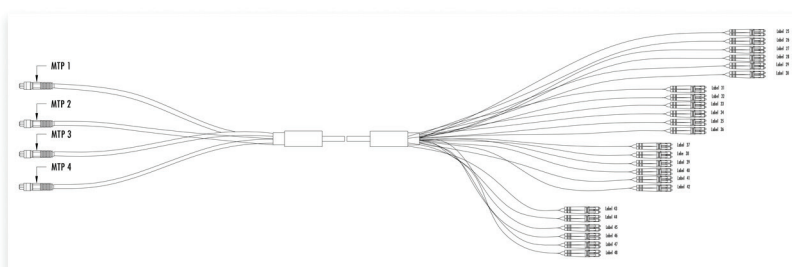
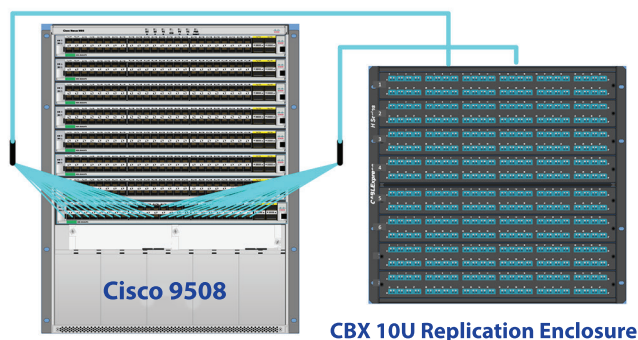
### FEATURES AND BENEFITS

- **Reduces installation time and easy migration** with any moves, adds, and changes.
- **TIA standards-based design** provides a clean look and eliminates additional loss points or microbends.
- **Integrates seamlessly** into a structured cabling system and eliminates downtime.
- **Passive Fiber Optic Replication:** Our Port Replication solution provides passive fiber optic replication specifically designed for the **Cisco Nexus 9508 Switch and its 48 Port Sfp+/Bi-Di and 36 Port QSFP 25/40/100/400 Gbps line cards**, ensuring optimal performance.
- **Pre-engineered Stagers for CBX Trunking Fiberoptic Assemblies:** Our Port Replication solution can be combined with our pre-engineered stagers for associated fiber optic trunk cables. This not only reduces the installation time but also enhances the overall aesthetic appeal of your setup.

The connection between the Cisco blade and CBX's Port Replication™ Modules is made with our industry leading custom *Skinny-Trunk™* fiber optic trunking assemblies, utilizing pre-engineered stagers. The trunking assemblies dress perfectly into the Cisco blade.



**Cisco Stagger 288 QSFP Port Replication™ Design: 36 Port 100/400G QSFP Line Card Replicator Trunks Singlemode OFNP Multi-Path™ MTP-MTP 16 Legs Trunks Per Side**



**Cisco Stagger 384 SFP+/Bi-Di Port Replication™ Design: 48 Port 25/40/100/400G Line Card Replicator Trunks Singlemode OFNP Multi-Path™ MTP-MTP 16 Legs Trunks Per Side**

The CABLEExpress **Nexus 48 Port Sfp+/Bi-Di and 36 Port QSFP 25/40/100/400 Gbps** fiber optic replication modules are housed in our 10U 8-slot Port Replication™ enclosure, establishing a direct 'one-to-one' relationship between the blade port and the patch panel port. The numbering scheme and port orientation of the module aligns identically between the blade and patch panel.